

SB-1000 USB-Serial Driver Installation Instructions

Installing the USB-Serial driver is a 2 part process. You will first need to run the “SB1000_Setup.msi” program to copy the driver files to your computer.

- When you run the installation program the first screen you will see is the welcome screen. Click Next.

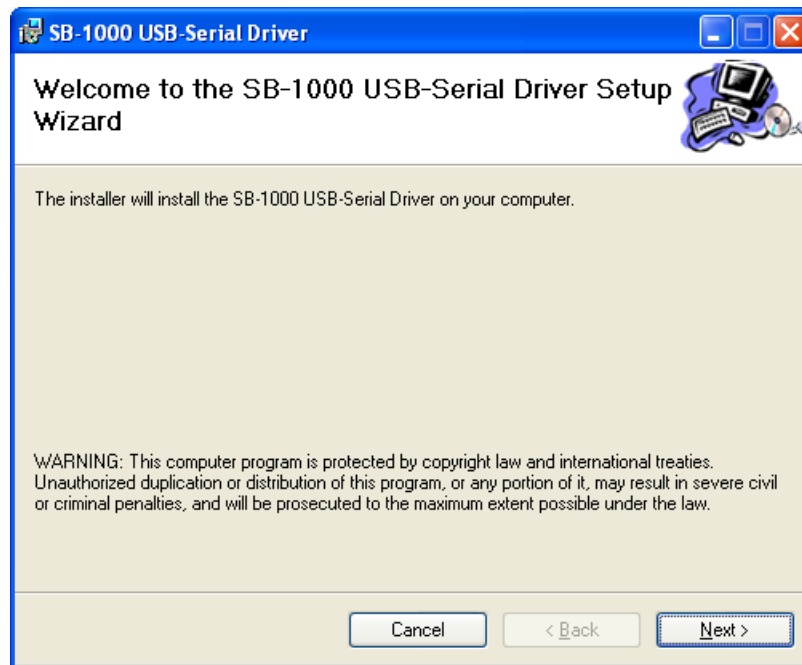


Figure 1

- Next you will see the Confirm Installation screen. Click Next to continue with the installation.

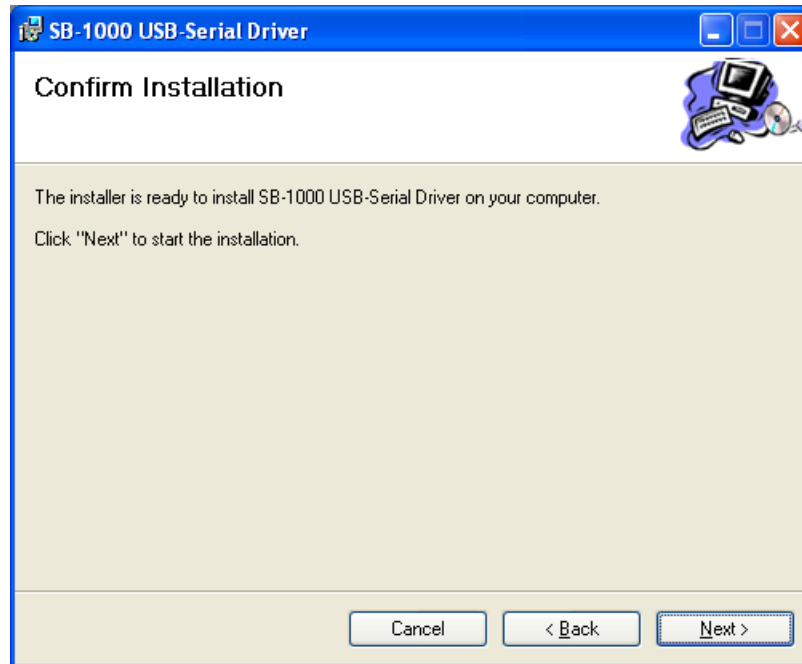


Figure 2

- When the installation is finished you will see the Installation Complete screen. Click Close to close the installation program.

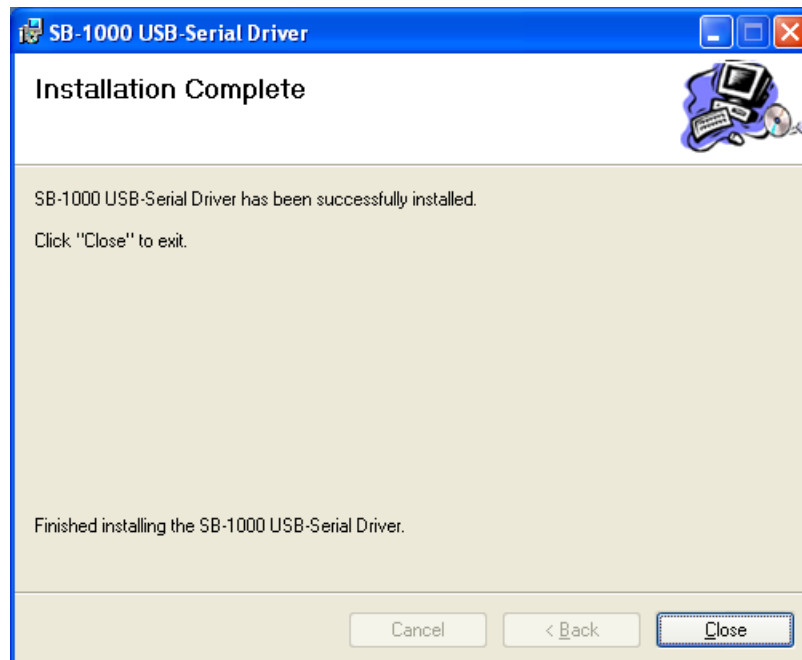


Figure 3

- Now make sure the SB-1000 controller has power and is turned on.
- Plug a USB cable into your computer and the other end into the USB port of the controller. Your computer will recognize that a USB device has been attached and will show the “Found New Hardware Wizard” window. Select “No, not this time” and click Next to continue.



Figure 4

- Make sure the “Install the software automatically (Recommended)” is selected and click Next to continue.

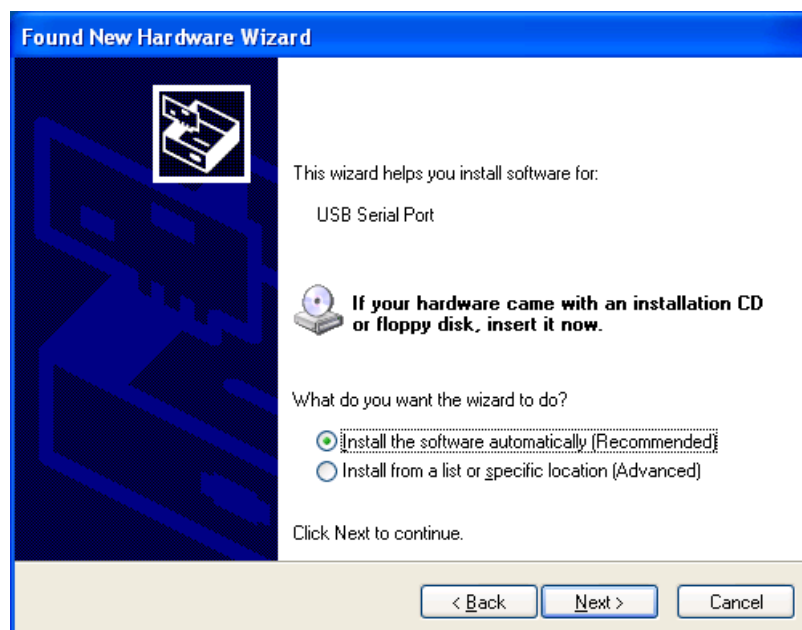


Figure 5

- A Hardware Installation screen that reads that this software “has not passed Windows Logo testing” will be displayed. Click “Continue Anyway.”



Figure 6

- As the files are installed with the Found New Hardware Wizard you will see the following screen.

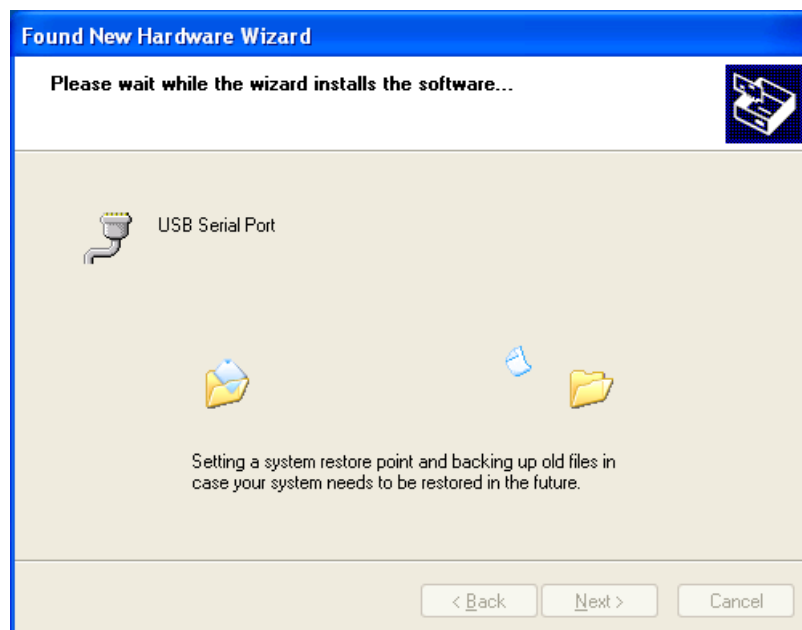


Figure 7

- Once the Found New Hardware Wizard completes click Finish to close.

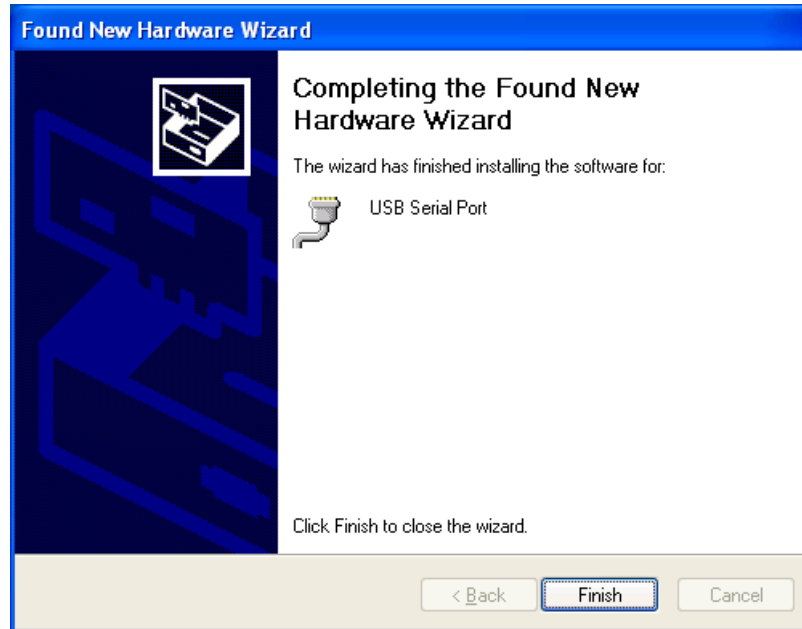


Figure 8